

**B-Filme presents** a non-stop-dirty-entertainment production: **INTO THE SUITE**

# INTO THE SUITE

**SEX**

**VIOLENCE**



a film by Detlef Bothe



**DRUGS**

**NAZIS**



**B-Filme presents**

Kristina Kostiv Niels Bruno Schmidt Detlef Bothe Christian Kahrmann Florence Matousek Kaiserschnitt Ludo Vici Crisjan Zöllner Caroline Bell Gerry Jochum  
Georg Lenz Tobias Schenke Pierre Kwitt Frederic Heidorn Agnes Thi-Mai

Director of Photography: Holger Fleig Editor: Markus Horn

Filmcomposer: Yann Kuhlmann additional Songs: thinkQ Costume: Petra Fassbender Light: Christoph Kraft

Sound: Lorenz Kalnz VFX Special Artist: Sin-Jay

Colourgrading: Campilots Studio Choreographie: Anne Retzlaff Assistant Director: Daniel Bier Producer's Assistant: Stanley Moeschke

Associate Producer: Fabienne Lopes Creative Producer: Ludo Vici

Co-Producer: Oliver Koblenzer - Film Division Produktion: B-Filme Producer: Detlef Bothe

Script and directed by Detlef Bothe

Music: Transitor Music Studio Campilots Postproduktion: Raaderstreet Lorenz Sound Studio Robert Schwenke © B-Filme 2014

[www.intothesuite.com](http://www.intothesuite.com)

# INTO THE SUITE

**a film by Detlef Bothe**  
**Drugs Entertainment and non stop dirty entertainment**  
**copyright 2014 b-filme / 86 min / DCP**  
**Stereo / Dolby Surround**

## PR note

The original idea was to act as if we - the German filmmakers - were a bunch of crazy Americans who come to Germany to make a movie with „the fucking Nazis“.

Because there is still unfinished business and new players in the glorious bond between these two nations.

## Shortline

An American Jew, a Russian Hollywood-Porn-star, a converted German Muslim, a black and a white Nazi and a berlin lesbian as well as a handful of horny girls and a waiter – all spend a night in a hotel suite. Who won't make it through the night?

**Director: Detlef Bothe**



Produktion & Presse  
b-filme  
Detlef Bothe  
0049 173 5767125  
bothe@b-filme.com

**Creative Producer & Sales: Ludo Vici**



Sales  
b-filme intern. Sales  
Ludo Vici  
0049 171 2458078  
Ludo@Ludo-Vici.com



# INTO THE SUITE

## Logline

Linda Grey, a young, famous, drug-addicted movie star of Russian origin, flies in to Berlin with her manager Rock Head to promote her new movie alongside her newest pop single "I wanna fuck a Nazi".

The video reporter Paul Heitmann, a converted Muslim, is pulling all kinds of tricks to get an interview with Linda. Once he succeeds to access her hotel suite, he gets pulled into the world filled with wild drug excesses, Nazi dealers and hot groupies.



## Synopsis

Paul, a video reporter who converted to Islam for a woman he loved, gets a promising and very important chance to finally boost his career: an interview with Linda grey, a young wild and successful movie star who is coming to Berlin to promote her latest film and a pop song.

Linda's past is defined by a horrible childhood, excessive drug consumption and abusive relationships to men and women followed by psychiatric stays where she was diagnosed with Bi-polar and borderline disorder. She is aggressive, in constant desperate need for love and appreciation and has an impressive criminal record already.

Rock Head

Accompanies Linda as her manager and producer. He's a maniac, a former actor and like Linda – a drug addict. A narcissistic character who controls Linda. He is Jewish and many of his ancestors died in German concentration camps.

Paul is ruthlessly chasing after an interview with Linda. He secretly films everything with his hidden cameras hoping to catch the big scandal that would bring him big money.

When two German dealers enter the scene - straightforward Nazis whose grandfathers actually served in the SS – things escalate quickly. They want Rock to give them the money for the drugs, but he doesn't have any on him, because he'd been enjoying himself with a bunch of groupies.

The suite turns into a trap for Paul, pulling him further down into the madness of sex, drugs, violence, vengeance and death.

A wake of destruction is the only thing left behind by the two Americans the following day.



## CAST

**Kristina Kostiv** as Linda Grey - the Star

**Niels Bruno Schmidt** as Rockhead - the manager

**Detlef Bothe** as Paul Heitmann - journalist

**Christian Kahrmann** as Helmut the Dealer

**Florence Matousek** as the Nata - ex girlfriend from Linda

**Jacques Linon** as Rolf the Dealer

**Crisjan Publicans** as Serviceman

**George Lenz** as George Milton

**Ludo Vici** as Doctor

**Pierre Kiwitt** as Nazi Dancer

**Frederic Heidorn** as Nazi Dancer

**Tobias Schenke** as Nazi Dancer

**Agnes Thi-Mai** as Fangirl

**Jenny Belinda** as Fangirl

**Caprice Crawford** as Fangirl

**Vladislava Kozlovskaja** as Fangirl

**Frank Neubauer** as Berlin

**Gerry Jochum** as Fan

**Toralf Nitsch** as Security





# INTO THE SUITE

**Kristina Kostiv**

born 1991 in Ukraine, has been living in Germany for several years and is attending an acting school, where b-filme cast her to play the main part – Linda Grey. „Into the suite“ is her first time movie appearance.

**Niels Bruno Schmidt,**

Niels Bruno Schmidt, born 1975 in Berlin, won the Adolf-Grimme prize in 1994 and has been acting for over 20 years now in movies and theatre. Films like „Schule“ or „Der Baader Meinhof Komplex“ were greatly enriched by his intensely acted, vivid characters. Niels Bruno Schmidt plays Rock Head Linda Grey's manager.

**Detlef Bothe,**

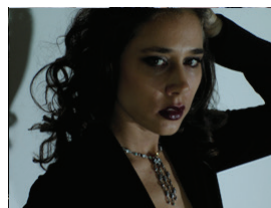
born in 1965 in Braunschweig, has appeared in over 80 productions in movies and television since 1990. He has been a filmmaker since 2001. In 2002 he won the jury's special prize at the Munich Filmfest.

**Christian Kahrmann**

first performed for the camera at the age of 8. He played in the TV show „Lindenstrasse“ for a while which led him to further employments in German and internationally co-produced feature films after that.

**Jacques Linon,**

called Kaisa or Kaisaschnitt, born 1983 in Berlin and is known as a Berlin rapper. Jobs as video editor, label owner of K.M.K. Records and filmmaker. This is his first role in a feature film.

**Florence Matousek,**

born 1980 in Switzerland, has worked in theatre, movies and TV since 2005.

# INTO THE SUITE



## TEAM & PRODUCTION

b- filme present „ non stop dirty entertainment“

Associate producer **Fabienne Lopez**  
Creative Producer **Ludo Vici**  
Producer **Detlef Bothe**  
Co - Producer **Oliver Koblenz**  
Assistant producer **Stanley Möschke**  
Director of Photography **Holger Fleig**  
Cutter **Markus Herm**  
Costume **Petra Fassbender**  
Sound **Lorenz Kainz**  
Light **Christoph Kraft**  
Assistant Director **Daniel Bier**  
Choreography **Anne Retzlaff**  
Music Composer **Yann Kuhlmann**  
Additional Songs **Eric Babak, thinkQ, Michael Ehninger**  
Director & Author **Detlef Bothe**







#### Director's note

"I wanna have a very, very long dolly shot in this camera set up". A line from Rainer Werner Fassbinder's films, that we used to re-enact as acting students under the direction of a fanatic acting coach and this line used to be my line. I played the director. To be honest, it took me a while to realize what those Fassbinder films were all about. They were about spiritual abysses. Your own of course, above all, but those were inspired by the abysses of others. So the others! Sartre. Human spiritual abysses!!

Berlin film festival 2010. Parties, Bars, beautiful people, in the ladies' room, with a fellow actress, a cocaine-dependant, charming woman, who could handle that stuff when going out to party. Back at home she'd rather feel miserable when she was on her own and the effects wore off and the depression kicked in. She'd cry a lot and consider suicide. She dragged me into the ladies' room to share a line. I declined, smiling, adding that with the powder you can never be sure, what's really in it and declared to be a „naturalist. In my case this meant that I wouldn't hesitate to chew, smoke or even eat a Coca leaf, but would never snort this filthy powder. I watched her beautiful trimmed body bend deep down to the toilet lid, gorgeously wrapped in the elegant evening dress, heard her snort the powder and thought to myself: why not make about all this fuckup in movie business, pop, party world with all its additions, abuses and abysses that you know pretty well being an insider.

Then she said she was fed up with her part in the RTL soap opera, but at least she would make enough money to attend a workshop in Los Angeles, after all she already had a hot connection with Quentin Tarantino, because he approached her in a bar in Berlin once. "That would be it!" she said "That dude could make me a star" snorting another line "if I fuck him" then she smirked at me from the side. I was thinking whether I should caress her back, grab her ass or not, whether this had been an invitation which took care of itself the instant she snorted that line and said she needed a drink and that Quentin would have surely joined her. I wondered how good her chances with Quentin could actually be as she flexed her body back up. As she did this I took a good look at her pretty, neat feet growing out of those high heels and I said "He sure would." "I'm done" she said and with the next brisk movement she was out of the door. We talked for another two hours, her stories grew darker (her lover was her cocaine dealer), but her face was radiant as she told me of all her disasters in the past year, as if life itself shot a movie with her, a movie featuring Coca, where events took inevitable, but nonetheless surprising turns.

We bid farewell quite heartily with some casual kisses and when I left Berlin the next day, the whole storyline of „into the suite" evolved in my head during the six hour ride to Munich. Four weeks later the script was finished.

Thank you T.H.



## CAST & TEAM

b- movies present „ non stop dirty entertainment“

Associate producer **Fabienne Lopes** is our grande dame de la production.

Creative producer **Ludo Vici** is actor, political comedian, producer, theatre artist, web designer, composer, writer, blogger, spokesman, musician, 2nd Camera, video editor und sales agent.  
All these talents combined make four people. He is the creative producer.

Co - producer **Oliver Koblenz** is a shareholder in RTV Film, former actor and a beer brewer.

Assistant producer **Stanley Möschke** was the guy for everything. With some "Leipzig spirit".

Director of Photography **Holger Fleig** in his second collaboration with Detlef Bothe, after "mein". Shareholder in Campilot.

Editor **Markus Herm** ist responsible for editing countles theatrical movies like Krabat for example.  
This is his fifth editing with Detlef Bothe

Costume **Petra Fassbender** studied and practiced art before devoting herself to costume in film.

Sound **Lorenz Kainz** recorded the sound and is to be considered a sound freak.

Light&Set Design **Christoph Kraft** - The expert for various things

Assistant Director **Daniel Bier** - A picture book nerd. Even with the compulsory glasses, one that sees all. Also a data wrangler

Choreography **Anne Retzlaff** is a professional classic dancer, who has worked in many projects at various theaters, is also a singer and choreographer.

VFX artist **Sin Jay** and Singraphics his logo. Berliner, young, quickly and so...

Music Composer **Yann Kuhlmann** is composer, musician, singer, DJ and was a very popular flamenco musician.

Director, Autor, Producer **Detlef Bothe** and his fifth film out of a series of six, that is in the editing right now.  
Always the filmmaker: script, directing, actor, producer. Membership The German Film Academy (2005)